

# Dounreay site closure progress - 2005 onwards

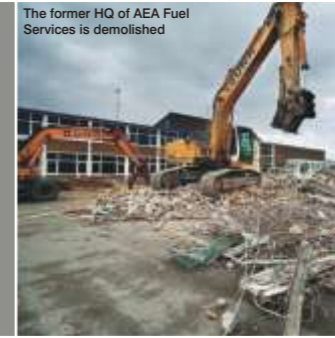
View of the Dounreay site



The mobile housing above the waste silo is removed

Total  
number of  
events on  
International  
Nuclear  
Event Scale

0



The former HQ of AEA Fuel Services is demolished



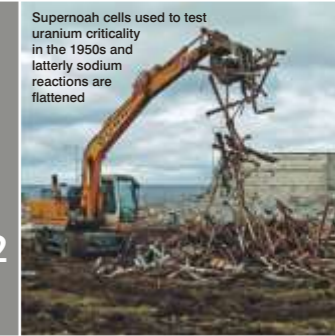
20,000 tonnes of concrete is poured to create a working platform to begin decommissioning the waste shaft



The low-active workshop is stripped for demolition

Total  
building floor area  
cleared

13714m<sup>2</sup>



Supernoah cells used to test uranium criticality in the 1950s and latterly sodium reactions are flattened



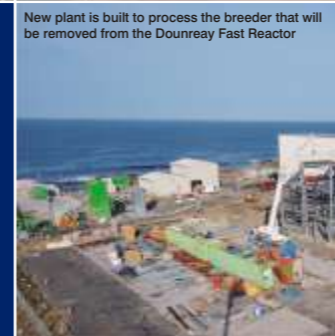
The old training building and PUMA cell during demolition



The fuel fabrication plant is demolished

Total  
buildings demolished  
since 2005

52



New plant is built to process the breeder that will be removed from the Dounreay Fast Reactor



The drawing registry is knocked to the ground



Checks are made of the new plant built to destroy the liquid metal hazard inside



Clean-up of particles begins on the seabed



Liquid ILW is solidified



Visitor centre demolition



Inactive laundry demolished

Total  
recordable incident  
rate means we are

5 times safer  
now than in  
2005



The Pulsed Column Laboratory is taken apart



The former D1200 laboratories are broken up



Vent stack is installed



Environmental monitoring



Over 300 boreholes were drilled to create a concrete barrier around the underground shaft

Total  
number of  
reportable  
radiological  
events

0



Additional storage is built for intermediate-level waste



Airline suit working

Total  
building floor area  
demolished is equivalent  
to approximately

3 football  
pitches



DFR workshop is flattened